

Features of Electrical Accessories, Material & Components

Sr. No.

1



Three Phase Deep Drawn Metal Meter Box

Features:

- ❖ *Suitable for Three Phase Electrical Meter Installation.*
- ❖ *Suitable for Domestic & Commercial Connection with trouble-free operation.*
- ❖ *Shockproof, Rustproof, Tamperproof & Weatherproof.*
- ❖ *Powder Coated as per relevant Standard.*
- ❖ *Recyclable Material.*

- ❖ *Flexible arrangement for Cable Entry/Exit from the Bottom side of the base.*
- ❖ *Having long life with Maintenance free.*
- ❖ *Suitable Louvers are provided for maintaining heat Temperature.*
- ❖ *IP 33 Protection class type tested from NABL accredited Lab.*
- ❖ *Easy to handle, Portable & easy to mount on wall/Pole.*
- ❖ *Easy to take the reading from the meter.*

Features of Electrical Accessories, Material & Components

Sr. No.

2.



Single Phase Deep Drawn Metal Meter Box

Features:

- ❖ Suitable for Single Phase Electrical Meter Installation.
- ❖ Suitable for Domestic & Commercial Connection with trouble-free operation.
- ❖ Shockproof, Rustproof, Tamperproof & Weatherproof.
- ❖ Powder Coated as per relevant Standard.
- ❖ Flexible arrangement for Cable Entry/Exit from the Bottom side of the base.

- ❖ Having long life with Maintenance free.
- ❖ Suitable Louvers are provided for maintaining heat Temperature.
- ❖ IP 33 Protection class type tested from NABL accredited Lab.
- ❖ Easy to handle, Portable & easy to mount on a wall/Pole.
- ❖ Easy to take the reading from the meter.
- ❖ Recyclable Material.

Features of Electrical Accessories, Material & Components

Sr. No.

3.



Single Phase Deep Drawn Metal Meter Box

Features:

- ❖ Suitable for Single Phase Electrical Meter Installation.
- ❖ Suitable for Domestic & Commercial Connection with trouble-free operation.
- ❖ Shockproof, Rustproof, Tamperproof & Weatherproof.
- ❖ Powder Coated as per relevant Standard.
- ❖ Flexible arrangement for Cable Entry/Exit from the Bottom sidewall of the base.
- ❖ Suitable Louvers are provided for maintaining heat Temperature.
- ❖ Having long life with Maintenance free.
- ❖ IP 33 Protection class type tested from NABL accredited Lab.
- ❖ Easy to handle, Portable & easy to mount on a wall/Pole.
- ❖ Easy to take the reading from the meter.
- ❖ Recyclable Material.

Features of Electrical Accessories, Material & Components

Sr. No.

4.



Single Phase Deep Drawn Metal Meter Box

Features:

- ❖ Suitable for Single Phase Electrical Meter Installation.
- ❖ Suitable for Domestic & Commercial Connection with trouble-free operation.
- ❖ Shockproof, Rustproof, Tamperproof & Weatherproof.
- ❖ Powder Coated as per relevant Standard.
- ❖ Flexible arrangement for Cable Entry/Exit from the Bottom side of the base.
- ❖ Having long life with Maintenance free.
- ❖ Suitable Louvers are provided for maintaining heat Temperature.
- ❖ IP 33 Protection class type tested from NABL accredited Lab.
- ❖ Easy to handle, Portable & easy to mount on a wall/Pole.
- ❖ Easy to take the reading from the meter.
- ❖ Recyclable Material.

Features of Electrical Accessories, Material & Components

Sr. No.

5.



Three Phase Deep Drawn Metal Meter Box

Features:

- ❖ Suitable for Three Phase Electrical Meter Installation.
 - ❖ Suitable for Domestic & Commercial Connection with trouble-free operation.
 - ❖ Shockproof, Rustproof, Tamperproof & Weatherproof.
 - ❖ Powder Coated as per relevant Standard.
 - ❖ Flexible arrangement for Cable Entry/Exit from the Bottom side of the base.
 - ❖ Having long life with Maintenance free.
 - ❖ Suitable Louvers are provided for maintaining heat Temperature.
 - ❖ IP 33 Protection class type tested from NABL accredited Lab.
 - ❖ Easy to handle, Portable & easy to mount on a wall/Pole.
 - ❖ Easy to take the reading from the meter.
- Recyclable Material.

Features of Electrical Accessories, Material & Components

Sr. No.

6.



Three Phase Deep Drawn Metal LT Distribution Box

Features:

- ❖ Suitable for Three Phase Electrical Connection.
- ❖ Suitable for Domestic & Commercial Connection with trouble-free operation.
- ❖ Shockproof, Rustproof, Tamperproof & Weatherproof.
- ❖ Powder Coated as per relevant Standard.
- ❖ Flexible arrangement for Cable Entry/Exit from the Bottom or/and sidewall of the base for 12 O/G.
- ❖ Having long life with Maintenance free.
- ❖ Capable for high Conductivity of EC Grade Aluminium/ Copper Bus Bar with/Without MOC.
- ❖ Having High Performance of Voltage & Current Capacity.
- ❖ IP 54 Protection class type tested from NABL accredited Lab.
- ❖ Easy to handle, Portable & easy to Install on Pole.
- ❖ Recyclable Material.

Features of Electrical Accessories, Material & Components

Sr. No.
7.



Three Phase Deep Drawn Metal Meter Box along with Modem Arrangement

Features:

- ❖ Suitable for Three Phase Electrical Meter and Modem Installation.
 - ❖ Suitable for Domestic & Commercial Connection with trouble-free operation.
 - ❖ Shockproof, Rustproof, Tamperproof & Weatherproof.
 - ❖ Powder Coated as per relevant Standard.
 - ❖ Flexible arrangement for Cable Entry/Exit from the Bottom or/and sidewall of the base.
 - ❖ Having long life with Maintenance free.
 - ❖ Suitable Louvers are provided for maintaining heat Temperature.
 - ❖ IP 33 Protection class type tested from NABL accredited Lab.
 - ❖ Easy to handle, Portable & easy to mount on a wall/Pole.
 - ❖ Easy to take the reading of different meters with the help of Modem.
- Recyclable Material.

Features of Electrical Accessories, Material & Components

Sr. No.

8.



Deep Drawn (Metal) CT Box along with Copper Bus Bar Arrangement

Features:

- ❖ Suitable for CT as well as Copper/Aluminium Bus Bar Installation.
- ❖ Suitable for Domestic & Commercial Connection with trouble-free operation.
- ❖ Shockproof, Rustproof, Tamperproof & Weatherproof.
- ❖ Powder Coated as per relevant Standard.
- ❖ Flexible arrangement for Cable Entry/Exit from the Bottom or/and sidewall of the base.
- ❖ Having long life with Maintenance free.
- ❖ Capable for high Conductivity of EC Grade Aluminium/ Copper Bus Bar
- ❖ IP 54 Protection class type tested from NABL accredited Lab.
- ❖ Easy to handle, Portable & easy to mount on a wall/Pole.
- ❖ Recyclable Material.

Features of Electrical Accessories, Material & Components

Sr. No.

9.



Deep Drawn (Metal) LT Distribution Box for 16 KVA DTR

Features:

- ❖ Designed Suitably for 16 KVA DTR
- ❖ Suitable for Commercial Connection with trouble-free operation.
- ❖ Shockproof, Rustproof, Tamperproof & Weatherproof.
- ❖ Powder Coated as per relevant Standard.
- ❖ Flexible arrangement for Cable Entry/Exit from the Bottom or/and sidewall of the base.
- ❖ Having long life with Maintenance free.

- ❖ Capable for high Conductivity of EC Grade Aluminium/ Copper Bus Bar with/Without MOC.
- ❖ Reputed make Switchgear & CTs having High Performance of Voltage & Current Carrying Capacity.
- ❖ IP 33 Protection class type tested from NABL accredited Lab.
- ❖ Easy to handle, Portable & easy to Install on Pole.
Recyclable Material.

Features of Electrical Accessories, Material & Components

Sr. No.

10.



Deep Drawn (Metal) LT CT Meter Box for 16 KVA DTR

Features:

- ❖ *Designed Suitably for 16 KVA DTR.*
- ❖ *Suitable for Commercial Connection with trouble-free operation.*
- ❖ *Shockproof, Rustproof, Tamperproof & Weatherproof.*
- ❖ *Powder Coated as per relevant Standard.*
- ❖ *Flexible arrangement for Cable Entry/Exit from the Bottom or/and sidewall of the base.*
- ❖ *Having long life with Maintenance free.*
- ❖ *Having two Compartment for flexible working in each one.*
- ❖ *Easy to take the reading from the meter.*
- ❖ *Reputed make CTs are used to have High work Performance*
- ❖ *IP 33 Protection class type tested from NABL accredited Lab.*
- ❖ *Easy to handle, Portable & easy to Install on Pole.*
- ❖ *Recyclable Material.*

Features of Electrical Accessories, Material & Components

Sr. No.

11.



Three Phase Deep Drawn Metal LT Distribution Box

Features:

- ❖ Suitable for Three Phase Electrical Connection.
- ❖ Suitable for Domestic & Commercial Connection with trouble-free operation.
- ❖ Shockproof, Rustproof, Tamperproof & Weatherproof.
- ❖ Powder Coated as per relevant Standard.
- ❖ Flexible arrangement for Cable Entry/Exit from the Bottom sidewall of the base for 12 O/G.
- ❖ Having long life with Maintenance free.
- ❖ Capable for high Conductivity of EC Grade Aluminium/ Copper Bus Bar with/Without MOC.
- ❖ Having High Performance of Voltage & Current Capacity.
- ❖ IP 54 Protection class type tested from NABL accredited Lab.
- ❖ Easy to handle, Portable & easy to Install on Pole.
- ❖ Recyclable Material.

Features of Electrical Accessories, Material & Components

Sr. No.

12.



Three Phase Deep Drawn Metal LT Distribution Box

Features:

- ❖ Suitable for Three Phase Electrical Connection.
- ❖ Suitable for Domestic & Commercial Connection with trouble-free operation.
- ❖ Shockproof, Rustproof, Tamperproof & Weatherproof.
- ❖ Powder Coated as per relevant Standard.
- ❖ Flexible arrangement for Cable Entry/Exit from the Bottom sidewall of the base for 8 O/G.
- ❖ Having long life with Maintenance free.
- ❖ Capable for high Conductivity of EC Grade Aluminium/ Copper Bus Bar with/Without MOC.
- ❖ Having High Performance of Voltage & Current Capacity.
- ❖ IP 54 Protection class type tested from NABL accredited Lab.
- ❖ Easy to handle, Portable & easy to Install on Pole.
- ❖ Recyclable Material.

Features of Electrical Accessories, Material & Components

Sr. No.

13.



Three Phase Deep Drawn Metal LT Distribution Box

Features:

- ❖ Suitable for Three Phase Electrical Connection.
- ❖ Suitable for Domestic & Commercial Connection with trouble-free operation.
- ❖ Shockproof, Rustproof, Tamperproof & Weatherproof.
- ❖ Powder Coated as per relevant Standard.
- ❖ Flexible arrangement for Cable Entry/Exit from the sidewall of the base.
- ❖ Having long life with Maintenance free.
- ❖ Capable for high Conductivity of EC Grade Aluminium/ Copper Bus Bar.
- ❖ Having High Performance of Voltage & Current Capacity.
- ❖ IP 54 Protection class type tested from NABL accredited Lab.
- ❖ Easy to handle, Portable & easy to Install on Pole.
- ❖ Recyclable Material.

Features of Electrical Accessories, Material & Components

Sr. No.

14.



Single Phase Deep Drawn Metal LT Distribution Box

Features:

- ❖ Suitably Designed for Single Phase Electrical Connection.
- ❖ Suitable for Domestic & Commercial Connection with trouble-free operation.
- ❖ Shockproof, Rustproof, Tamperproof & Weatherproof.
- ❖ Powder Coated as per relevant Standard.
- ❖ Flexible arrangement for Cable Entry/Exit from the Bottom sidewall of the base for 8 O/G.
- ❖ Having long life with Maintenance free.
- ❖ Capable for high Conductivity of EC Grade Aluminium/ Copper Bus Bar.
- ❖ Having High Performance of Voltage & Current Capacity.
- ❖ IP 54 Protection class type tested from NABL accredited Lab.
- ❖ Easy to handle, Portable & easy to Install on Pole.
- ❖ Recyclable Material.

Features of Electrical Accessories, Material & Components

Sr. No.

15.



Single Phase Deep Drawn Metal LT Distribution Box

Features:

- ❖ Suitably Designed for Single Phase Electrical Connection.
- ❖ Suitable for Domestic & Commercial Connection with trouble-free operation.
- ❖ Shockproof, Rustproof, Tamperproof & Weatherproof.
- ❖ Powder Coated as per relevant Standard.
- ❖ Flexible arrangement for Cable Entry/Exit from the Bottom sidewall of the base.
- ❖ Having long life with Maintenance free.
- ❖ Capable for high Conductivity of EC Grade Aluminium/ Copper Bus Bar.
- ❖ Having High Performance of Voltage & Current Capacity.
- ❖ IP 54 Protection class type tested from NABL accredited Lab.
- ❖ Easy to handle, Portable & easy to Install on Pole.
- ❖ Recyclable Material.

Features of Electrical Accessories, Material & Components

Sr. No.

16.



Single Phase Deep Drawn Metal LT Distribution Box

Features:

- ❖ Suitably Designed for Single Phase Electrical Connection.
- ❖ Suitable for Domestic & Commercial Connection with trouble-free operation.
- ❖ Shockproof, Rustproof, Tamperproof & Weatherproof.
- ❖ Powder Coated as per relevant Standard.
- ❖ Flexible arrangement for Cable Entry/Exit from the Bottom sidewall of the base for 8 O/G.
- ❖ Having long life with Maintenance free.
- ❖ Capable for high Conductivity of EC Grade Aluminium/ Copper Bus Bar.
- ❖ Having High Performance of Voltage & Current Capacity.
- ❖ IP 54 Protection class type tested from NABL accredited Lab.
- ❖ Easy to handle, Portable & easy to Install on Pole.
- ❖ Recyclable Material.

Features of Electrical Accessories, Material & Components

Sr. No.

17.



Three Phase Deep Drawn Metal LT Distribution Box

Features:

- ❖ Suitable for Three Phase Electrical Connection.
- ❖ Suitable for Domestic & Commercial Connection with trouble-free operation.
- ❖ Shockproof, Rustproof, Tamperproof & Weatherproof.
- ❖ Powder Coated as per relevant Standard.
- ❖ Flexible arrangement for Cable Entry/Exit from the Bottom sidewall of the base for 12 Way.
- ❖ Having long life with Maintenance free.

- ❖ Capable for high Conductivity of EC Grade Aluminium/ Copper Bus Bar with/Without MOC.
- ❖ Having additional Locking Arrangements.
- ❖ Having High Performance of Voltage & Current Capacity.
- ❖ IP 54 Protection class type tested from NABL accredited Lab.
- ❖ Easy to handle, Portable & easy to Install on Pole.
- ❖ Recyclable Material.

Features of Electrical Accessories, Material & Components

Sr. No.

18.



Three Phase Deep Drawn Metal LT Distribution Box

Features:

- ❖ Suitable for Three Phase Electrical Connection.
- ❖ Suitable for Domestic & Commercial Connection with trouble-free operation.
- ❖ Shockproof, Rustproof, Tamperproof & Weatherproof.
- ❖ Powder Coated as per relevant Standard.
- ❖ Flexible arrangement for Cable Entry/Exit from the Bottom sidewall of the base for 8 Way.
- ❖ Having long life with Maintenance free.

- ❖ Capable for high Conductivity of EC Grade Aluminium/ Copper Bus Bar.
- ❖ Having additional Mounting Arrangement of Bus Bar.
- ❖ Having High Performance of Voltage & Current Capacity.
- ❖ IP 54 Protection class type tested from NABL accredited Lab.
- ❖ Easy to handle, Portable & easy to Install on Pole.
- ❖ Recyclable Material.

Features of Electrical Accessories, Material & Components

Sr. No.

19.



Three Phase Deep Drawn Metal LT Distribution Box

Features:

- ❖ Suitable for Three Phase Electrical Connection.
 - ❖ Suitable for Domestic & Commercial Connection with trouble-free operation.
 - ❖ Shockproof, Rustproof, Tamperproof & Weatherproof.
 - ❖ Powder Coated as per relevant Standard.
 - ❖ Flexible arrangement for Cable Entry/Exit from the Bottom sidewall of the base for 8 Way.
 - ❖ Having long life with Maintenance free.
-
- ❖ Capable for high Conductivity of EC Grade Aluminium/ Copper Bus Bar.
 - ❖ Having additional Mounting Arrangement of Bus Bar.
 - ❖ Having High Performance of Voltage & Current Capacity.
 - ❖ IP 54 Protection class type tested from NABL accredited Lab.
 - ❖ Easy to handle, Portable & easy to Install on Pole.
 - ❖ Recyclable Material.

Features of Electrical Accessories, Material & Components

Sr. No.
20.



6 in 1 Single Phase Deep Drawn Metal Meter Box along with Bus Bar Arrangement

Features:

- ❖ Suitable for 6 in 1 Single Phase Electrical Meter and Bus Bar Installation.
- ❖ Suitable for Domestic Connection with trouble-free operation.
- ❖ Shockproof, Rustproof, Tamperproof & Weatherproof.
- ❖ Powder Coated as per relevant Standard.
- ❖ Flexible arrangement for Cable Entry/Exit from the Bottom sidewall of the base.
- ❖ Having long life with Maintenance free.
- ❖ Suitable Louvers are provided for maintaining heat Temperature.
- ❖ IP 33 Protection class type tested from NABL accredited Lab.
- ❖ Easy to handle, Portable & easy to mount on a wall/Pole.
- ❖ Easy to take the reading of different meters with the help of Window.
- ❖ Recyclable Material.

Features of Electrical Accessories, Material & Components

Sr. No.

21.



4 in 1 Single Phase Deep Drawn Metal Meter Box along with Bus Bar Arrangement

Features:

- ❖ Suitable for 4 in 1 Single Phase Electrical Meter and Bus Bar Installation.
- ❖ Suitable for Domestic Connection with trouble-free operation.
- ❖ Shockproof, Rustproof, Tamperproof & Weatherproof.
- ❖ Powder Coated as per relevant Standard.
- ❖ Flexible arrangement for Cable Entry/Exit from the Bottom sidewall of the base.
- ❖ Having long life with Maintenance free.
- ❖ Suitable Louvers are provided for maintaining heat Temperature.
- ❖ IP 33 Protection class type tested from NABL accredited Lab.
- ❖ Easy to handle, Portable & easy to mount on a wall/Pole.
- ❖ Easy to take the reading of different meters with the help of Window.
Recyclable Material.

Features of Electrical Accessories, Material & Components

Sr. No.

22.



Deep Drawn (Metal) LT Distribution Box for 25 KVA DTR

Features:

- ❖ *Designed Suitable for 25 KVA DTR using Switchgear*
- ❖ *Suitable for Commercial Connection with trouble-free operation.*
- ❖ *Shockproof, Rustproof, Tamperproof & Weatherproof.*
- ❖ *Powder Coated as per relevant Standard.*
- ❖ *Flexible arrangement for Cable Entry/Exit from the Bottom sidewall of the base.*
- ❖ *Having long life.*
- ❖ *Capable for high Conductivity of EC Grade Aluminium/ Copper Bus Bar with/Without MOC.*
- ❖ *Reputed make Switchgear & CTs having High Performance of Voltage & Current Carrying Capacity.*
- ❖ *IP 33 Protection class type tested from NABL accredited Lab.*
- ❖ *Easy to handle, Portable & easy to Install on Pole.*
- ❖ *Recyclable Material.*

Features of Electrical Accessories, Material & Components

Sr. No.

23.



Deep Drawn (Metal) LT Distribution Box for 25 KVA DTR

Features:

- ❖ Designed Suitable for 25 KVA DTR using MCCB & Bus Bar
- ❖ Suitable for Commercial Connection with trouble-free operation.
- ❖ Shockproof, Rustproof, Tamperproof & Weatherproof.
- ❖ Powder Coated as per relevant Standard.
- ❖ Flexible arrangement for Cable Entry/Exit from the Bottom sidewall of the base.
- ❖ Having long life with Maintenance free.
- ❖ Capable for high Conductivity of EC Grade Aluminium/ Copper Bus Bar.
- ❖ Reputed make MCCB for High-Performance Capacity.
- ❖ Having additional Locking Arrangements.
- ❖ IP 33 Protection class type tested from NABL accredited Lab.
- ❖ Easy to handle, Portable & easy to Install on Pole.
- ❖ Recyclable Material.

Features of Electrical Accessories, Material & Components

Sr. No.

24.



Deep Drawn (Metal) LT Distribution Box for 25 KVA DTR

Features:

- ❖ *Designed Suitable for 25 KVA DTR using Kit Kat*
- ❖ *Suitable for Commercial Connection with trouble-free operation.*
- ❖ *Shockproof, Rustproof, Tamperproof & Weatherproof.*
- ❖ *Powder Coated as per relevant Standard.*
- ❖ *Flexible arrangement for Cable Entry/Exit from the Bottom sidewall of the base.*
- ❖ *Having long life.*

- ❖ *Capable for high Conductivity of EC Grade Aluminium/ Copper Bus Bar with/Without MOC.*
- ❖ *Reputed make Kit Kat & CTs having High-Performance Capacity.*
- ❖ *The window for a meter reading.*
- ❖ *IP 33 Protection class type tested from NABL accredited Lab.*
- ❖ *Easy to handle, Portable & easy to Install on Pole.*
- ❖ *Recyclable Material.*

Features of Electrical Accessories, Material & Components

Sr. No.

25.



Deep Drawn (Metal) LT CT Meter Box for 63 KVA DTR

Features:

- ❖ *Designed Suitably for 63 KVA DTR.*
- ❖ *Suitable for Commercial Connection with trouble-free operation.*
- ❖ *Shockproof, Rustproof, Tamperproof & Weatherproof.*
- ❖ *Powder Coated as per relevant Standard.*
- ❖ *Flexible arrangement for Cable Entry/Exit from the sidewall of the base thin the Upper Compartment.*
- ❖ *Having long life.*
- ❖ *Having two Compartment for flexible working in each one.*
- ❖ *Easy to take the reading from the meter.*
- ❖ *Reputed make CTs are used to have High work Performance*
- ❖ *IP 33 Protection class type tested from NABL accredited Lab.*
- ❖ *Easy to handle, Portable & easy to Install on Pole.*
- ❖ *Recyclable Material.*

Features of Electrical Accessories, Material & Components

Sr. No.

26.



Deep Drawn (Metal) LT CT Meter Box

Features:

- ❖ *Designed Suitably for 415V.*
- ❖ *Suitable for Commercial Connection with trouble-free operation.*
- ❖ *Shockproof, Rustproof, Tamperproof & Weatherproof.*
- ❖ *Powder Coated as per relevant Standard.*
- ❖ *Flexible arrangement for Cable Entry/Exit from the sidewall of the base in the Upper Compartment.*
- ❖ *Having long life with Maintenance free.*
- ❖ *Having two Compartment for flexible working in each one.*
- ❖ *Window to take the reading from the meter.*
- ❖ *Having additional Locking Arrangement*
- ❖ *IP 33 Protection class type tested from NABL accredited Lab.*
- ❖ *Easy to handle, Portable & easy to Install on Pole.*
- ❖ *Recyclable Material.*

Features of Electrical Accessories, Material & Components

Sr. No.
27.



4 in 1 Single Phase Deep Drawn Metal Meter Box along with Bus Bar Arrangement

Features:

- ❖ Suitable for 4 in 1 Single Phase Electrical Meter and Bus Bar Installation.
- ❖ Suitable for Domestic & Commercial Connection with trouble-free operation.
- ❖ Shockproof, Rustproof, Tamperproof & Weatherproof.
- ❖ Powder Coated as per relevant Standard.
- ❖ Flexible arrangement for Cable Entry/Exit from the Bottom sidewall of the base.
- ❖ Having long life with Maintenance free.
- ❖ Suitable Louvers are provided for maintaining heat Temperature.
- ❖ IP 33 Protection class type tested from NABL accredited Lab.
- ❖ Easy to handle, Portable & easy to mount on a wall/Pole.
- ❖ Easy to take the reading of different meters with the help of Window.
- ❖ Recyclable Material.

Features of Electrical Accessories, Material & Components

Sr. No.

28.



Features

- ❖ Designed Suitable for 200 KVA DTR using Switchgear
- ❖ Suitable for Commercial Connection with trouble-free operation.
- ❖ Shockproof, Rustproof, Tamperproof & Weatherproof.
- ❖ Powder Coated as per relevant Standard.
- ❖ Flexible arrangement for Cable Entry/Exit from the Bottom sidewall of the base.
- ❖ Having long life.
- ❖ Capable for high Conductivity of EC Grade Aluminium/ Copper Bus Bar.



- ❖ Double Door Compartment for easy working/Installation.
- ❖ Double Locking Arrangement for safety Purpose
- ❖ Reputed make Switchgear having High-Performance working Capacity.
- ❖ IP 33 Protection class type tested from NABL accredited Lab.
- ❖ Easy to handle, Portable & easy to Install on Pole.
- ❖ Recyclable Material.

Deep Drawn (Metal) LT Distribution Box for 200 KVA DTR

Features of Electrical Accessories, Material & Components

Sr. No.

29.



Deep Drawn (Metal) LT Distribution Box for 63 KVA DTR

Features

- ❖ Designed Suitable for 63 KVA DTR using Switchgear
 - ❖ Suitable for Commercial Connection with trouble-free operation.
 - ❖ Shockproof, Rustproof, Tamperproof & Weatherproof.
 - ❖ Powder Coated as per relevant Standard.
 - ❖ Flexible arrangement for Cable Entry/Exit from the Bottom sidewall of the base.
 - ❖ Having long life.
-
- ❖ Capable for high Conductivity of EC Grade Aluminium/ Copper Bus Bar.
 - ❖ Double Door Compartment for easy working/Installation.
 - ❖ Double Locking Arrangement for safety Purpose
 - ❖ Reputed make Switchgear having High-Performance working Capacity.
 - ❖ IP 33 Protection class type tested from NABL accredited Lab.
 - ❖ Easy to handle, Portable & easy to Install on Pole.
 - ❖ Recyclable Material.

Features of Electrical Accessories, Material & Components

Sr. No.

30.



SMC LT CT Meter Box for 400/5A CT Ratio

Features

- ❖ *Designed Suitably for 400/5A CT & Meter Installation.*
- ❖ *Suitable for Commercial Connection with trouble-free operation.*
- ❖ *Shockproof, Tamperproof & Weatherproof.*
- ❖ *Adequate Strength, Unbreakable, Anti-Corrosive, Vermin Proof, U.V. Stabilized, and Flame Retardant.*
- ❖ *Having Stability to Sustain at high/Low Temperature.*
- ❖ *Flexible arrangement for Cable Entry/Exit from the sidewall of the base in the Upper & Lower Compartment.*
- ❖ *Having long life.*
- ❖ *Having two Compartment for flexible working in each one.*
- ❖ *Easy to take the reading from the meter.*
- ❖ *Reputed make CTs are used to have High work Performance*
- ❖ *IP 55 Protection class type tested from NABL accredited Lab.*
- ❖ *Easy to handle, Portable & easy to Install on Pole.*

Features of Electrical Accessories, Material & Components

Sr. No.

31.



SMC LT CT Meter Box

Features

- ❖ *Designed Suitably for CT & Meter Installation.*
- ❖ *Suitable for Commercial Connection with trouble-free operation.*
- ❖ *Shockproof, Tamperproof & Weatherproof.*
- ❖ *Adequate Strength, Unbreakable, Anti-Corrosive, Vermin Proof, U.V. Stabilized, and Flame Retardant.*
- ❖ *Having Stability to Sustain at high/Low Temperature.*
- ❖ *Flexible arrangement for Cable Entry/Exit from the Bottom or/and sidewall of the base.*
- ❖ *Having long life.*
- ❖ *Having a Single Cover for flexible Opening.*
- ❖ *Easy to take the reading from the meter.*
- ❖ *Reputed make CTs are used to have High work Performance*
- ❖ *IP 55 Protection class type tested from NABL accredited Lab.*
- ❖ *Easy to handle, Portable & easy to Install on Pole.*



Single Phase Deep Drawn Metal LT Distribution Box

- ❖ *Suitably Designed for Single Phase Electrical Connection.*
- ❖ *Suitable for Domestic & Commercial Connection with trouble-free operation.*
- ❖ *Shockproof, Rustproof, Tamperproof & Weatherproof.*
- ❖ *Powder Coated as per relevant Standard.*
- ❖ *Flexible arrangement for Cable Entry/Exit from the Bottom sidewall of the base for 8 O/G.*
- ❖ *Having long life with Maintenance free.*
- ❖ *Capable for high Conductivity of EC Grade Aluminium/ Copper Bus Bar.*
- ❖ *Having High Performance of Voltage & Current Capacity.*
- ❖ *IP 54 Protection class type tested from NABL accredited Lab.*
- ❖ *Easy to handle, Portable & easy to Install on Pole.*
- ❖ *Recyclable Material.*

Features of Electrical Accessories, Material & Components

Sr. No.

32.



SMC Three Phase LT Distribution Box

Features

- ❖ *Designed Suitably for Three Phase Electrical Connection.*
- ❖ *Suitable for Domestic & Commercial Connection with trouble-free operation.*
- ❖ *Shockproof, Tamperproof & Weatherproof.*
- ❖ *Adequate Strength, Unbreakable, Anti-Corrosive, Vermin Proof, U.V. Stabilized, and Flame Retardant.*
- ❖ *Having Stability to Sustain at high/Low Temperature.*
- ❖ *Flexible arrangement for Cable Entry/Exit from the Bottom or/and sidewall of the base.*
- ❖ *Having long life.*
- ❖ *Capable for high Conductivity of EC Grade Aluminium/ Copper Bus Bar.*
- ❖ *IP 55 Protection class type tested from NABL accredited Lab.*
- ❖ *Easy to handle, Portable & easy to Install on Pole.*

Features of Electrical Accessories, Material & Components

Sr. No.

33.



SMC Three Phase Meter Box

Features

- ❖ Suitable for Three Phase Electrical Meter Installation.
- ❖ Suitable for Domestic & Commercial Connection with trouble-free operation.
- ❖ Shockproof, Tamperproof & Weatherproof.
- ❖ Adequate Strength, Unbreakable, Anti-Corrosive, Vermin Proof, U.V. Stabilized, and Flame Retardant.
- ❖ Having Stability to Sustain at high/Low Temperature.
- ❖ Flexible arrangement for Cable Entry/Exit from the Bottom sidewall of the base.
- ❖ Having long life.
- ❖ Easy to take the reading from the meter.
- ❖ IP 54 & 55 Protection class type tested from NABL accredited Lab.
- ❖ Easy to handle, Portable & easy to Install on Pole.

Features of Electrical Accessories, Material & Components

Sr. No.

34.



SMC 6 in 1 Meter Box along with Bus Bar Arrangement

Features

- ❖ *Suitable for 6 in 1 Single/Three Phase Electrical Meter Installation.*
- ❖ *Suitable for Domestic Connection with trouble-free operation.*
- ❖ *Shockproof, Tamperproof & Weatherproof.*
- ❖ *Adequate Strength, Unbreakable, Anti-Corrosive, Vermin Proof, U.V. Stabilized, and Flame Retardant.*
- ❖ *Having Stability to Sustain at high/Low Temperature.*
- ❖ *Flexible arrangement for Cable Entry/Exit from the Bottom sidewall of the base.*
- ❖ *Having long life.*
- ❖ *Easy to take the reading from Every meter at the same time.*
- ❖ *IP 33 Protection class type tested from NABL accredited Lab.*
- ❖ *Easy to handle, Portable & easy to Install on Pole.*

Features of Electrical Accessories, Material & Components

Sr. No.

35.



SMC Three Phase LT Distribution Box

Features

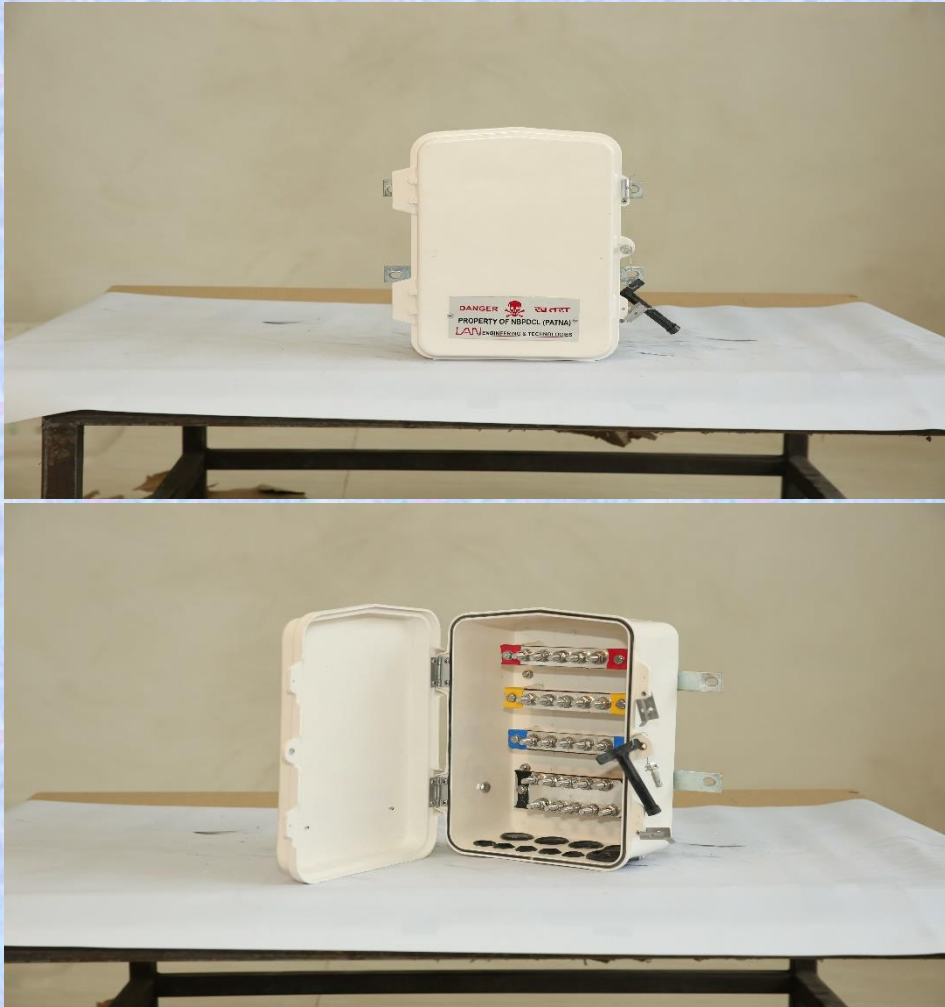
- ❖ *Designed Suitably for Three Phase Electrical Connection.*
- ❖ *Suitable for Domestic & Commercial Connection with trouble-free operation.*
- ❖ *Shockproof, Tamperproof & Weatherproof.*
- ❖ *Adequate Strength, Unbreakable, Anti-Corrosive, Vermin Proof, U.V. Stabilized, and Flame Retardant.*
- ❖ *Having Stability to Sustain at high/Low Temperature.*

- ❖ *Flexible arrangement for Cable Entry/Exit from the Bottom or/and sidewall of the base.*
- ❖ *Having long life.*
- ❖ *Capable for high Conductivity of EC Grade Aluminium/ Copper Bus Bar.*
- ❖ *IP 55 Protection class type tested from NABL accredited Lab.*
Easy to handle, Portable & easy to Install on Pole.

Features of Electrical Accessories, Material & Components

Sr. No.

36.



SMC Three Phase LT Distribution Box

Features

- ❖ *Designed Suitably for Three Phase Electrical Connection.*
- ❖ *Suitable for Domestic & Commercial Connection with trouble-free operation.*
- ❖ *Shockproof, Tamperproof & Weatherproof.*
- ❖ *Adequate Strength, Unbreakable, Anti-Corrosive, Vermin Proof, U.V. Stabilized, and Flame Retardant.*
- ❖ *Having Stability to Sustain at high/Low Temperature.*

- ❖ *Flexible arrangement for Cable Entry/Exit from the Bottom sidewall of the base.*
- ❖ *Having long life.*
- ❖ *Capable for high Conductivity of EC Grade Aluminium/ Copper Bus Bar.*
- ❖ *IP 55 Protection class type tested from NABL accredited Lab.*
- ❖ *Easy to handle, Portable & easy to Install on Pole.*

Features of Electrical Accessories, Material & Components

Sr. No.

32.



SMC Single Phase LT Distribution Box

Features

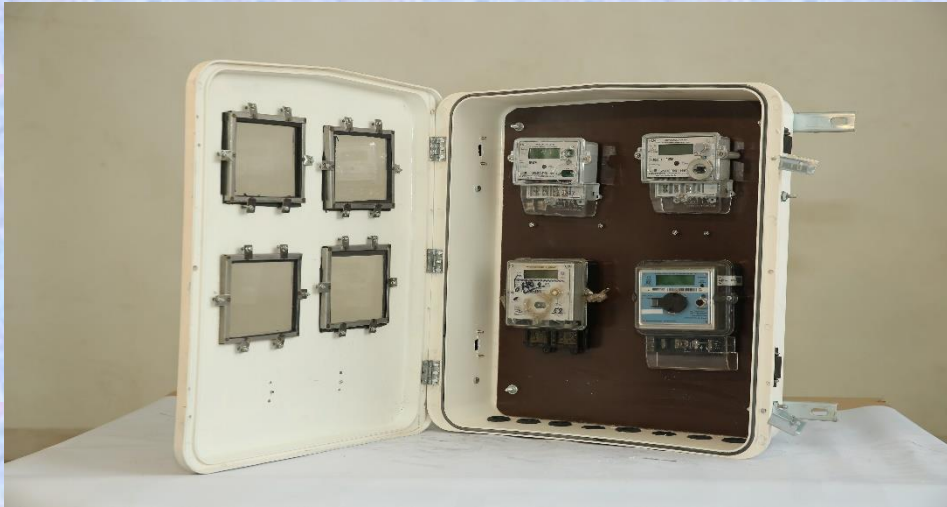
- ❖ *Designed Suitably for Single Phase Electrical Connection.*
- ❖ *Suitable for Domestic & Commercial Connection with trouble-free operation.*
- ❖ *Shockproof, Tamperproof & Weatherproof.*
- ❖ *Adequate Strength, Unbreakable, Anti-Corrosive, Vermin Proof, U.V. Stabilized, and Flame Retardant.*
- ❖ *Having Stability to Sustain at high/Low Temperature.*

- ❖ *Flexible arrangement for Cable Entry/Exit from the Bottom sidewall of the base for 7 Way.*
- ❖ *Having long life.*
- ❖ *Capable for high Conductivity of EC Grade Aluminium/ Copper Bus Bar.*
- ❖ *IP 55 Protection class type tested from NABL accredited Lab.*
- ❖ *Easy to handle, Portable & easy to Install on Pole.*

Features of Electrical Accessories, Material & Components

Sr. No.

33.



SMC 4 in 1 Meter Box

Features

- ❖ Suitable for 4 in-1 Electrical Meter Installation.
- ❖ Suitable for Domestic Connection with trouble-free operation.
- ❖ Shockproof, Tamperproof & Weatherproof.
- ❖ Adequate Strength, Unbreakable, Anti-Corrosive, Vermin Proof, U.V. Stabilized, and Flame Retardant.
- ❖ Having Stability to Sustain at high/Low Temperature.
- ❖ Flexible arrangement for Cable Entry/Exit from the Bottom or/and sidewall of the base.
- ❖ Having long life.
- ❖ Easy to take the reading of all meters with the help of Window.
- ❖ IP 55 Protection class type tested from NABL accredited Lab.

34.



SMC Meter Board

- ❖ Suitably Designed for Electrical Meter Installation.
- ❖ Suitable for Connection with trouble-free operation.
- ❖ Shockproof, Adequate Strength, Unbreakable, Anti-Corrosive, Vermin Proof, U.V. Stabilized, and Flame Retardant.
- ❖ Having Stability to Sustain at high/Low Temperature.
- ❖ Additional arrangement for the provision of MCB.
- ❖ Having long life.
- ❖ Easy to handle, Portable & easy to Install on Pole.

Features of Electrical Accessories, Material & Components

Sr. No.

35.



Polycarbonate 4 in 1 Meter Box

Features

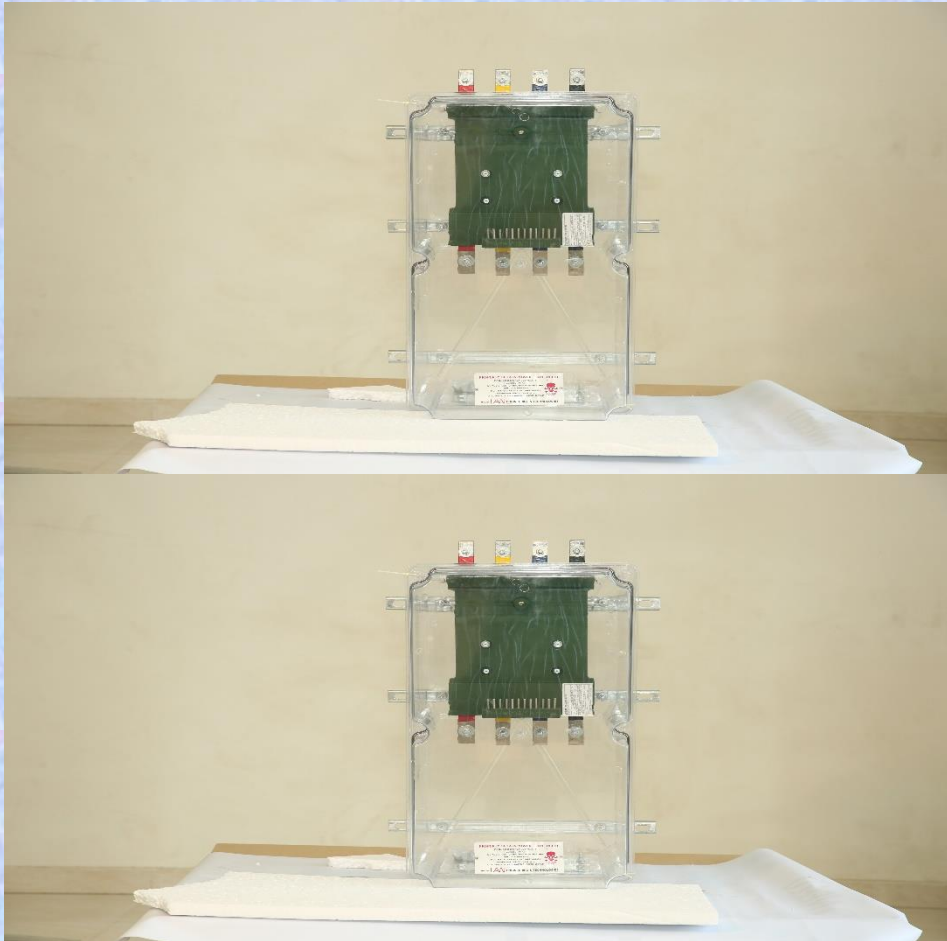
- ❖ *Suitable for 4 in-1 Electrical Meter Installation.*
- ❖ *Suitable for Domestic Connection with trouble-free operation.*
- ❖ *Shockproof, Tamperproof & Weatherproof.*
- ❖ *U.V. Stabilized and Flame Retardant.*
- ❖ *Having Stability to Sustain at high/Low Temperature.*

- ❖ *Flexible arrangement for Cable Entry/Exit from the Bottom sidewall of the base.*
- ❖ *Having long life.*
- ❖ *Transparent Cover to take the reading of all meters as well as to view Internal Connections.*
- ❖ *IP 55 Protection class type tested from NABL accredited Lab.*
- ❖ *Easy to handle, Portable & easy to Install.*

Features of Electrical Accessories, Material & Components

Sr. No.

36.



Polycarbonate LTCT Meter Box

Features

- ❖ Suitable for LTCT Installation.
- ❖ Suitable for Commercial Connection with trouble-free operation.
- ❖ Shockproof, Tamperproof & Weatherproof.
- ❖ U.V. Stabilized and Flame Retardant.
- ❖ Having Stability to Sustain at high/Low Temperature.
- ❖ Flexible arrangement for Cable Entry/Exit from the Bottom sidewall of the base.

- ❖ Having long life.
- ❖ Transparent Base & Cover to view Internal Connections/ Conditions.
- ❖ IP 55 Protection class type tested from NABL accredited Lab.
- ❖ Easy to handle, Portable & easy to Install.

Features of Electrical Accessories, Material & Components

Sr. No.

37.



Polycarbonate Single Phase Meter Box

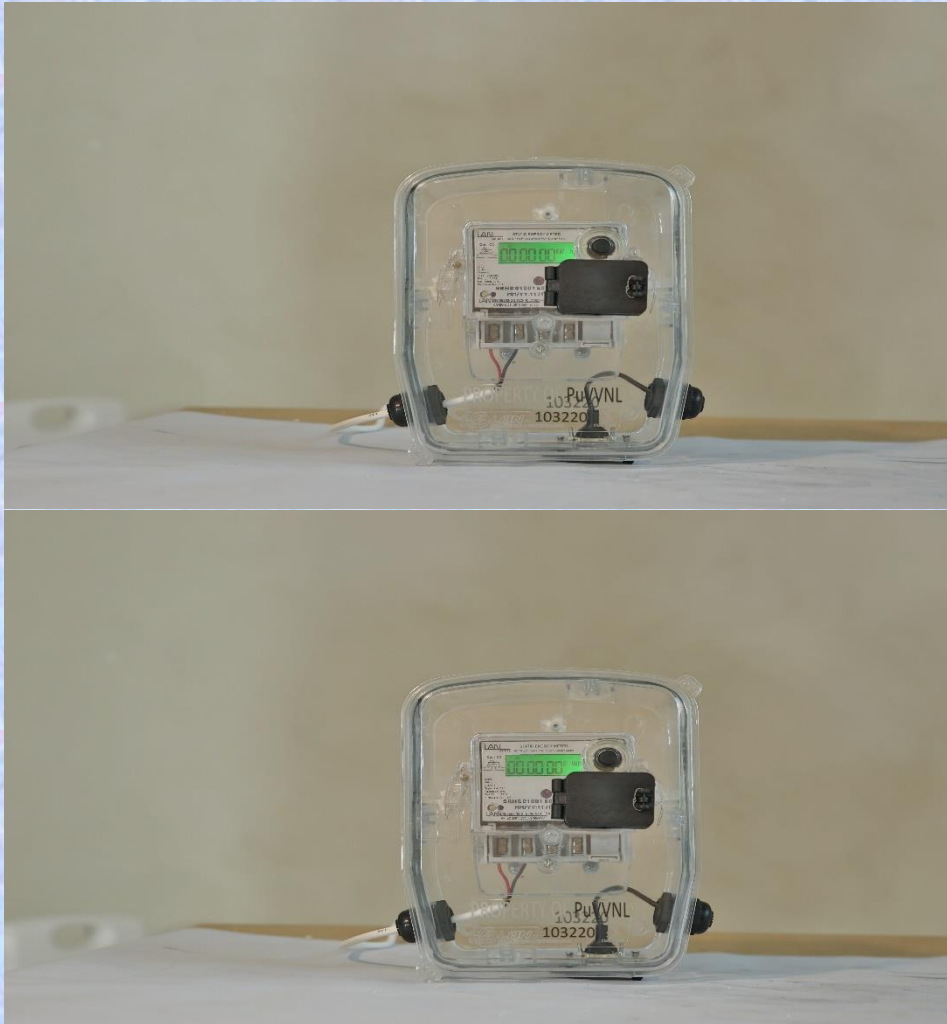
Features

- ❖ *Suitable for Single Phase Electrical Meter Installation.*
- ❖ *Suitable for Domestic Connection with trouble-free operation.*
- ❖ *Shockproof, Tamperproof & Weatherproof.*
- ❖ *U.V. Stabilized and Flame Retardant.*
- ❖ *Having Stability to Sustain at high/Low Temperature.*
- ❖ *Flexible arrangement for Cable Entry/Exit from the Bottom sidewall of the base.*
- ❖ *Having long life.*
- ❖ *Galvanised Plate to support easy and long-lasting Meter support.*
- ❖ *Transparent Cover to view Internal Arrangement.*
- ❖ *IP 55 Protection class type tested from NABL accredited Lab.*
- ❖ *Easy to handle, Portable & easy to Install.*

Features of Electrical Accessories, Material & Components

Sr. No.

38.



Polycarbonate Single Phase Meter Box Push-Fit Type

Features

- ❖ Suitable for Single Phase Electrical Meter Installation.
- ❖ Suitable for Domestic Connection with trouble-free operation.
- ❖ Shockproof, Tamperproof & Weatherproof.
- ❖ U.V. Stabilized and Flame Retardant.
- ❖ Having Stability to Sustain at high/Low Temperature.
- ❖ Flexible arrangement for Cable Entry/Exit from the Bottom or/and sidewall of the base.
- ❖ Having long life.
- ❖ Optical Arrangement & Push Button Provided for Meter Reading.
- ❖ Transparent Base & Cover to view Internal Arrangement.
- ❖ IP 55 Protection class type tested from NABL accredited Lab.
- ❖ Easy to handle, Portable & easy to Install.

Features of Electrical Accessories, Material & Components

Sr. No.

39.



SMC Three Phase LT Distribution Box

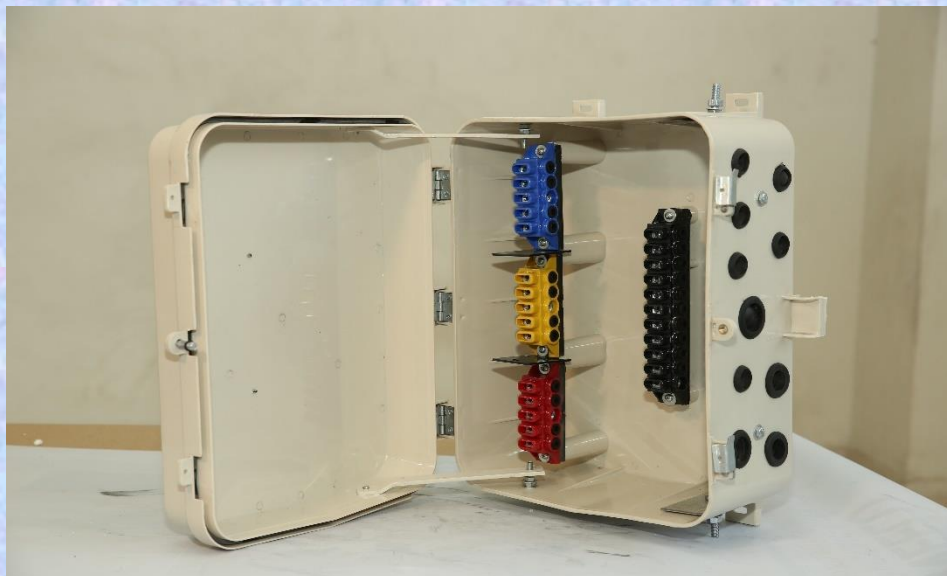
Features

- ❖ *Designed Suitably for Three Phase Electrical Connection.*
- ❖ *Suitable for Domestic & Commercial Connection with trouble-free operation.*
- ❖ *Shockproof, Tamperproof & Weatherproof.*
- ❖ *Adequate Strength, Unbreakable, Anti-Corrosive, Vermin Proof, U.V. Stabilized, and Flame Retardant.*
- ❖ *Having Stability to Sustain at high/Low Temperature.*
- ❖ *Flexible arrangement for Cable Entry/Exit from the Bottom sidewall of the base for 7 Way.*
- ❖ *Having long life.*
- ❖ *Capable for high Conductivity of EC Grade Aluminium/ Copper Bus Bar.*
- ❖ *IP 55 Protection class type tested from NABL accredited Lab.*
- ❖ *Easy to handle, Portable & easy to Install on Pole.*

Features of Electrical Accessories, Material & Components

Sr. No.

40.



SMC Three Phase LT Distribution Box

Features

- ❖ *Designed Suitably for Three Phase Electrical Connection.*
- ❖ *Suitable for Domestic & Commercial Connection with trouble-free operation.*
- ❖ *Shockproof, Tamperproof & Weatherproof.*
- ❖ *Adequate Strength, Unbreakable, Anti-Corrosive, Vermin Proof, U.V. Stabilized, and Flame Retardant.*
- ❖ *Having Stability to Sustain at high/Low Temperature.*
- ❖ *Flexible arrangement for Cable Entry/Exit from the Bottom sidewall of the base.*
- ❖ *Having long life.*
- ❖ *Special Locking arrangement Provided.*
- ❖ *IP 55 Protection class type tested from NABL accredited Lab.*
- ❖ *Easy to handle, Portable & easy to Install on Pole.*

Features of Electrical Accessories, Material & Components

Sr. No.

41.



Single Phase Deep Drawn Metal LT Distribution Box

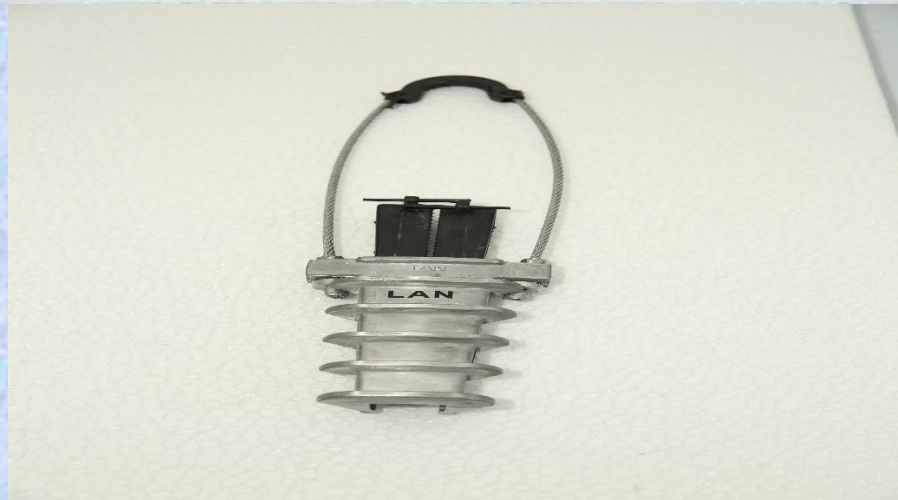
Features

- ❖ Suitably Designed for Single Phase Electrical Connection.
- ❖ Suitable for Domestic & Commercial Connection with trouble-free operation.
- ❖ Shockproof, Rustproof, Tamperproof & Weatherproof.
- ❖ Powder Coated as per relevant Standard.
- ❖ Flexible arrangement for Cable Entry/Exit from the Bottom sidewall of the base for 8 O/G.
- ❖ Having long life with Maintenance free.
- ❖ Capable for high Conductivity of EC Grade Aluminium/ Copper Bus Bar.
- ❖ Insulator for Bus Bar Mounting provided.
- ❖ Having High Performance of Voltage & Current Capacity.
- ❖ IP 54 Protection class type tested from NABL accredited Lab.
- ❖ Easy to handle, Portable & easy to Install on Pole.
- ❖ Recyclable Material.

Features of Electrical Accessories, Material & Components

Sr. No.

42.



Anchoring Clamp/Dead End Clamp

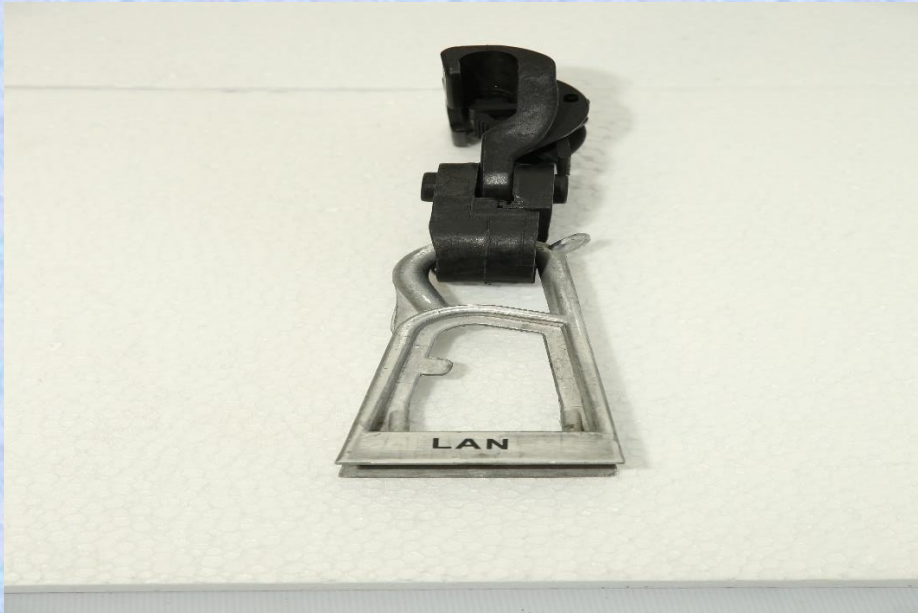
Features

- ❖ Suitably designed for L.V. & AB Cable Insulated /Bare Neutral Messenger.
- ❖ Clamps are designed for different messenger cross-sections for various Climatic Conditions
- ❖ Suitable for Commercial Connection with trouble-free operation.
- ❖ Weatherproof and UV-radiation resistant thermoplastic.
- ❖ The Bail of Hot Dip Galvanized Steel with Aluminium or Plastic Keeper.
- ❖ Excellent Mechanical, Electrical & Environmental Characteristics.
- ❖ The product type-tested tested with relevant Standards.
- ❖ Easy to Install without tools using both brackets/hooks.
- ❖ Easy to handle & easy to Portable.

Features of Electrical Accessories, Material & Components

Sr. No.

43.



Suspension Clamp

Features

- ❖ Suitably designed for L.V. & AB Cable Insulated /Bare Neutral Messenger.
- ❖ Suspension Clamps are easy to operate and are made using premium quality materials.
- ❖ Clamp and movable link are made of Weather and UV-resistant glass fiber reinforced Polymers.
- ❖ Clamps is designed for different messengercross-secsections for various Climatic Conditions.
- ❖ Used for LV ABC Cables in an insulated Messenger wire with Standard hook installation without tools.
- ❖ The groove and locking Part are available for Messenger Wire.
- ❖ Used for Insulated & Bare Cable.
- ❖ Excellent Mechanical, Electrical & Environmental Characteristics.
- ❖ The product type-tested tested with relevant Standards.
- ❖ Suitable for Commercial Connection with trouble-free operation.
- ❖ Easy to handle & easy to Portable.

Features of Electrical Accessories, Material & Components

44.



SS Strap with Buckle

- ❖ *Suitably Designed for mount brackets on Poles.*
- ❖ *It consists of Stainless Steel.*
- ❖ *The buckle is well designed to provide appropriate Gripping.*
- ❖ *Suitable for Commercial Connection with trouble-free operation.*
- ❖ *Excellent Mechanical, Electrical & Environmental Characteristics.*
- ❖ *The product type-tested tested with relevant Standards.*
- ❖ *Anti-Corrosive with Weatherproof.*
- ❖ *Having Smooth Edge for safety purposes.*
- ❖ *Easy to Install. Easy to handle & easy to Portable.*

45.

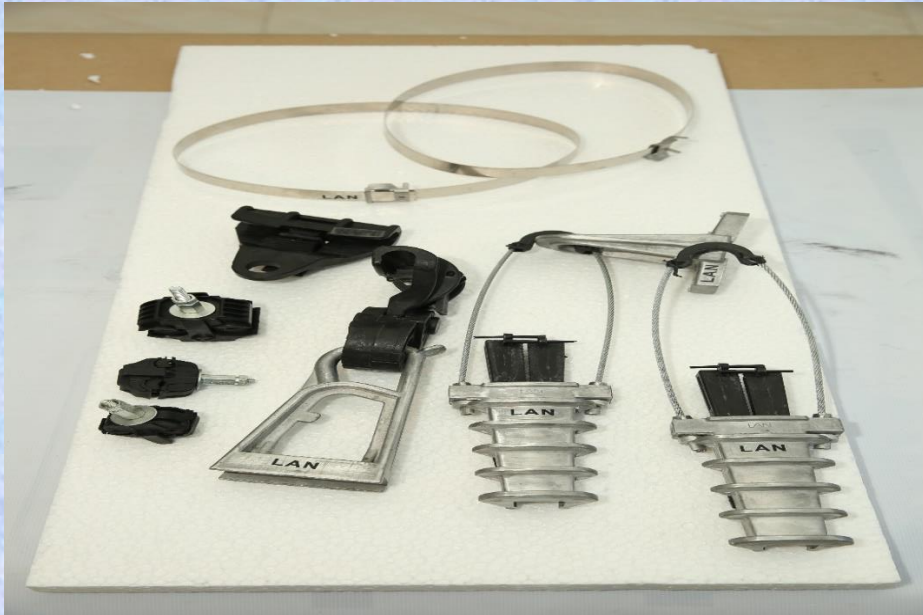


Suspension Bracket

- ❖ *Suitably designed for Suspension Clamp.*
- ❖ *Suspension Brackets are easy to assemble and are made using premium quality materials.*
- ❖ *Weather and UV resistant glass fibber reinforced Polymers.*
- ❖ *Excellent Mechanical, Electrical & Environmental Characteristics.*
- ❖ *Suitable for various Climatic Conditions.*
- ❖ *Used for Insulated & Bare Cable.*
- ❖ *The product is type-tested with relevant Standards.*
- ❖ *Suitable for Commercial Connection with trouble-free operation.*
- ❖ *Easy to Carry.*

Features of Electrical Accessories, Material & Components

46.



AB Cable Accessories complete Set

- ❖ *AB Cable Accessories Complete set consists of Suspension Clamp, Dead End Clamp, Insulating Piercing Connector, SS Strap with Buckle, Suspension Bracket & Dead-End Bracket.*
- ❖ *Suitably designed for mounting on Poles.*
- ❖ *Every Item is designed with Premium Quality Material.*
- ❖ *Suitable for Commercial Connection with trouble-free operation.*
- ❖ *Anti-Corrosive with Weatherproof and can be used in all Climatic Conditions.*
- ❖ *Every part is well equipped with proper gripping capacity.*
- ❖ *Excellent Mechanical, Electrical & Environmental Characteristics.*
- ❖ *The product is type-tested with relevant Standards.*
- ❖ *The complete set is well designed for working with safety.*
- ❖ *Easy to Install.*
- ❖ *Easy to handle & easy to Portable.*

Features of Electrical Accessories, Material & Components

Sr. No.

47.



Insulation Piercing Connector

Features

- ❖ Suitably designed for L.V. & AB Cable.
 - ❖ IPC is made of UV resistance Premium Quality Polyamide with TIN-Copper/Aluminium bridges EC bolts with shear head and cap.
 - ❖ Easy to Carry & Install.
 - ❖ Excellent Mechanical, Electrical & Environmental Characteristics.
 - ❖ Suitable for various Climatic Conditions.
-
- ❖ IPC can be used in Power Distribution Companies for Mani & Branch connections, DB Connections, Street Light connections, and Household connections.
 - ❖ The product is type-tested with relevant Standards.
 - ❖ Suitable for Commercial Connection with trouble-free operation.

Features of Electrical Accessories, Material & Components

Sr. No.
48.



Insect Killer Racket

- ❖ Suitably Designed to Kill the Insect.
- ❖ 400 mah lithium-ion battery.
- ❖ USB Charging
- ❖ Electronic Insect Killing Swatter.
- ❖ Charging Time: up to 6 hrs.
- ❖ Heavy Duty.
- ❖ 3 Months Warranty.
- ❖ Charging Cable Inside the Box.
- ❖ Made in India

Sr. No.
49.



Fan Heater

Features

- ❖ Wattage: 2000W / 220V / 50Hz
- ❖ Two heats setting 1000W / 2000W
- ❖ Compact Design
- ❖ Easy for Mobility
- ❖ Automatic Thermal Cut out for safety
- ❖ A stronger Fan helps hot air Circulate
- ❖ Thermostat Control to maintain desired room temperature
- ❖ Heater in Winter and Personal fan in Summer
- ❖ Made in India

Features of Electrical Accessories, Material & Components

Sr. No.
50.



Single Phase Static Energy Meter

Features

- ❖ Designed suitable for Single Phase 2 Wire Static Energy Meter
- ❖ Capable for 240 Volts
- ❖ Frequency 50 Hz
- ❖ Class 1.0 Accuracy Level
- ❖ Rating 5-30A
- ❖ Made in India



Three Phase Static Energy Meter

- ❖ Designed suitable for three phase 4 Wire Static Energy Meter
- ❖ Capable for 240 Volts
- ❖ Frequency 50 Hz
- ❖ Class 1.0 Accuracy Level
- ❖ Rating 10-60A
- ❖ Made in India

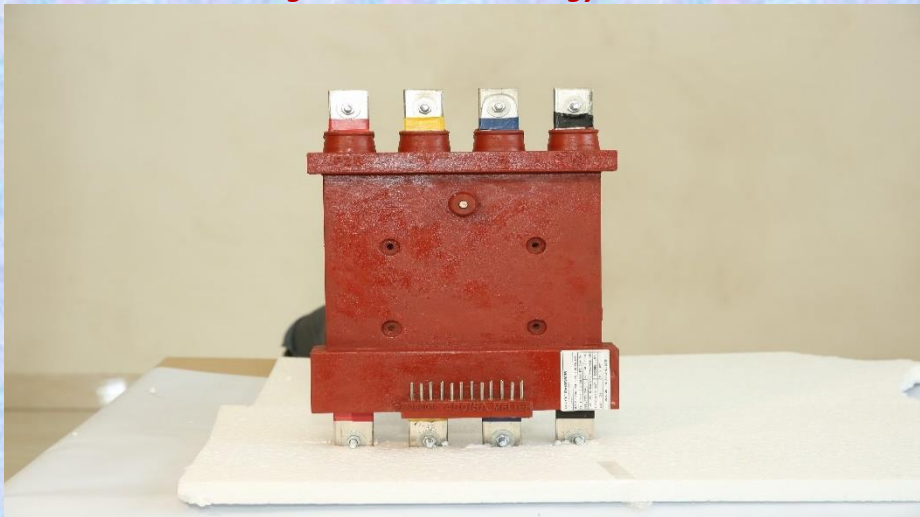
Features of Electrical Accessories, Material & Components

Sr. No.

51.



Single Phase Smart Energy Meter



Current Transformer Bar Type 400/5A

Features

- ❖ Designed suitable for Single Phase 2 Wire Smart Energy Meter
- ❖ Capable for 240 Volts
- ❖ Frequency 50 Hz
- ❖ Class 1.0 Accuracy Level
- ❖ Rating 5-30A
- ❖ Optical Port for Reading
- ❖ Push Button/ Battery Back up
- ❖ Made in India

- ❖ Designed Resin Cast B-bar Primary Type having ratio 400/5A
- ❖ Three CTs for 3Ph and 4th CT for Neutral cast as one unit.
- ❖ High-Graded CRGO Lamination
- ❖ Pin type terminals for Connections
- ❖ Rated Voltage: 400V
- ❖ System Frequency: 50 Hz
- ❖ Maximum Current Density: 1.6 Amp/Sq.mm
- ❖ Accuracy Class: 0.5
- ❖ Rated Burden: 5VA
- ❖ Insulation Level: 0.66kV/3kV, Class B
- ❖ Bus Bar Material: Tinned Copper
- ❖ Anti-Tampered Non-removable fixation of
- ❖ Made in India

Features of Electrical Accessories, Material & Components

Sr. No.

52.



Current Transformer Ring Type 50/5A

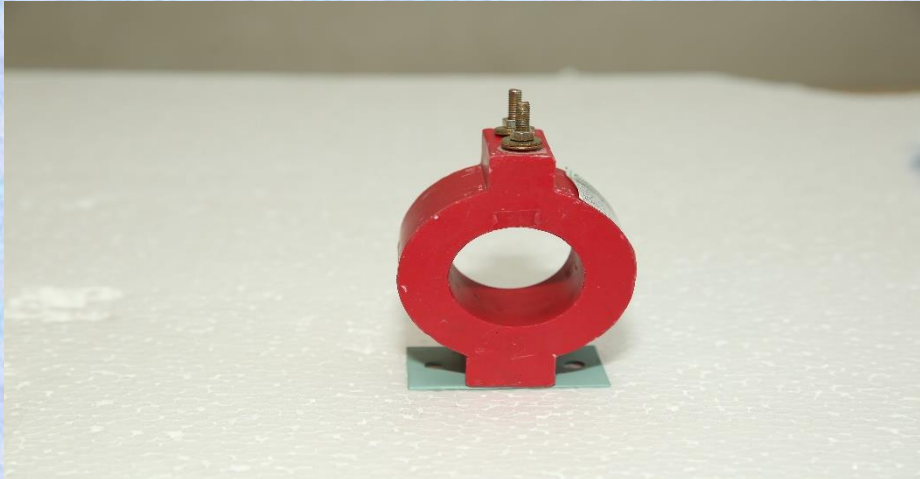
Features

- ❖ *Designed Resin Cast Ring Type having a ratio of 50/5A for Metering*
- ❖ *High-Graded CRGO Lamination*
- ❖ *Rated Voltage: 415V*
- ❖ *System Frequency: 50 Hz*
- ❖ *Maximum Current Density: 1.6 Amp/Sq.mm*
- ❖ *Accuracy Class: 0.5*
- ❖ *Rated Burden: 5VA*
- ❖ *Insulation Class: E*
- ❖ *Core detail: Core-1*
- ❖ *Bus Bar Material: Tinned Copper*
- ❖ *Anti-Tampered Non-removable fixation of*
- ❖ *Made in India*

Features of Electrical Accessories, Material & Components

Sr. No.

53.



Current Transformer Ring Type

Features

- ❖ *Designed Resin Cast Ring Type for Metering*
- ❖ *High-Graded CRGO Lamination*
- ❖ *Rated Voltage: 415V*
- ❖ *System Frequency: 50 Hz*
- ❖ *Maximum Current Density: 1.6 Amp/Sq.mm*
- ❖ *Accuracy Class: 0.5*
- ❖ *Rated Burden: 5VA*
- ❖ *Insulation Level: 0.66kV/3kV, Class B*
- ❖ *Bus Bar Material: Tinned Copper*
- ❖ *Anti-Tampered Non-removable fixation of*
- ❖ *Made in India*